



Mechanical Division

**HVAC | PLUMBING | FIRE PROTECTION
PROCESS PIPING | CUSTOM METALS**



HOOPER HISTORY

A TRUSTED PARTNER SINCE 1913

Hooper Corporation was founded in 1913 as a small mechanical contractor located in Madison, Wisconsin. Since our earliest beginnings, we have remained a union employer, known for hiring the best and brightest skilled tradespeople in the industry.

In addition to our work ethic and technical expertise, Hooper's long-standing commitment to excellence has earned the trust and respect of many key clients and colleagues over the years.

Hooper's core values prioritize Safety Empowerment, Respectful Collaboration, Quality Craftsmanship, and Community Engagement. These key guiding principles have endured for more than 12 decades and are time-tested with proven results.

As a privately-held company with no outside shareholders, Hooper is proud of the long-standing partnerships we have forged over a century of success. While many things have changed since our earliest beginnings, one thing will always remain: our unwavering commitment to doing business the right way.

Few mechanical contractors can match Hooper's 110-year history without default, let alone our exceptional bonding capacity, strong safety record, and solid financial standing.

Hooper's Mechanical Division is known for completing some of the Midwest's most challenging construction projects for clients in a wide range of industries.

Our project management and production teams collaborate across all disciplines to fabricate and install materials for commercial plumbing, HVAC, fire protection, custom metals and process piping.



HOOPER TODAY

1,400+ Employees

\$600+ Million in annual revenue

5 Office Locations

2022 Subcontractor of the Year
The Daily Reporter

2023 Workforce Development Provider of the Year
Better Business Bureau

2024 Corporate Citizen of the Year
In Business Magazine



SERVICES

CONSTRUCTION & FABRICATION

Hooper's construction and fabrication abilities are highly regarded and unique to the industry.

One key factor that sets us apart is our 207,000-square-foot state-of-the-art Fabrication Facility, equipped with cutting-edge technology to support process piping, plumbing, HVAC, sheet metal, fire protection, and custom metals projects. Our streamlined fabrication and installation process, in addition to our advanced scheduling software, ensures projects are completed safely, on time, and within budget.



We have proven that pre-fabricating in the shop versus in the field provides the following advantages:

- Safer work per man-hour
- Cost savings
- Increased productivity
- Shorter timelines
- Immeasurable quality

Hooper is proudly ASME and National Board Code Certified—an achievement that requires maintaining a rigorous quality control program and passing a comprehensive tri-annual audit. This certification ensures a structured, well-documented approach to material handling, welder training, and quality control, allowing us to adapt seamlessly to specific project requirements.

Equipped with these advanced tools and expertise, Hooper consistently delivers precision, reliability, and cost-effective solutions while having the ability to fabricate virtually any component necessary with excess capacity.



Fabrication Facility Highlights

- Dedicated carbon & stainless bays
- Dedicated high-purity fabrication room with orbital welders and prepping tools
- 16 welding stations (7 automated and 9 custom) with jib cranes and manifold compress gases at each
- 2 state-of-the-art fire protection pipe welding stations
- 8 overhead cranes (2 to 7.5 ton)
- Watts profiling machine
- Borescoping equipment for process and pharmaceutical piping
- Automated cutting station for efficient copper fabrication
- VAV box assembly area
- Fabrication of rectangular, round, oval, perforated, lined, and pre-insulated duct work
- Custom stacks, stainless steel assemblies, and structural supports
- UA shipping label
- ISO Certification pursuit
- Additional 60,000 square feet of warehouse storage for fabrication organization



SERVICES

DESIGN BUILD

For building projects in need of preconstruction services, Hooper provides Design Assist, Design Coordination, and Design Build Options.

By leveraging advanced VDC and staying current with emerging technologies, we tackle even the most complex challenges. Early involvement in planning allows us to manage resources efficiently, refine cost estimates, and address contingencies while meeting all owner requirements. Planning meetings ensure optimized manpower, equipment, and supplier coordination—minimizing costs and maximizing efficiency. At Hooper, we turn complex designs into successful, streamlined projects.



VERONA, WI

Arrowhead Pharmaceuticals

Hooper played an integral role in the design-build process of this multiphase office, lab and production facility with collaboration from all Mechanical Division departments.

SERVICES

SERVICE & MAINTENANCE

Beyond project completion, Hooper provides 24/7 on-call commercial and industrial service.

Hooper's diligent quality assurance and control processes ensure minimal warranty callbacks and smooth project closeouts. Our team's leadership, attention to detail, and commitment to schedules have consistently resulted in fewer punch list items and seamless transitions.

Our highly trained staff, equipped with state-of-the-art tools and in-house equipment, is ready to handle any issue. Whether for warranty support or scheduled maintenance, our service team is always available to keep your systems running at peak performance.





“Hooper Corporation’s expertise of design and field execution of work, coupled with their collaborative and innovative spirit make them one of our go-to experts for our most significant projects.”

THOMAS J. RYAN
TOTAL WATER TREATMENT SYSTEMS INC

AREAS OF EXPERTISE

HOOPER SAFETY

Safety will always be Hooper’s most highly regarded core value.

Empowering our employees with information that can save lives and prevent harm is a core value we proudly live by every day. We are committed to setting a new safety standard for our industry that addresses not only the physical, but also the mental and emotional well-being of our employees, clients, and partners.



**SAFETY
EMPOWERED**

Over 2.5 million hours worked without a lost time injury!

It requires a total team commitment to the Hooper Corporation safety culture and the focus and belief of a zero accident/injury philosophy. The mission focus of this team of experts is on injury and loss prevention through program and policy development, training and site inspections.

The Safety Department’s qualifications include Master Degreed personnel, OSHA 500 trainers, NSC First Aid/CPR/AED instructors and nationally certified crane examiners (CIC - Crane Institute Certification).

Training has always been a cornerstone of a successful safety program. Our state-of-the-art dedicated training facility is located in DeForest, WI for up-to date training needs. Training classes range from First Aid/CPR/AED and OSHA 10/30 Hour Classes to national crane certification.

AREAS OF EXPERTISE

HVAC

Hooper's HVAC installations range from highly technical pharmaceutical spaces to industrial mills to large commercial buildings.

Hooper builds systems for large-scale facilities offering scalability, zoning, and energy efficiency. Our highly-technical HVAC systems use advanced chiller, boiler, and air handling units for precise temperature management while integrating smart automation for remote monitoring and energy savings. Built with durable materials, they comply with ASHRAE standards and environmental regulations. Customization is key, with hospitals, data centers, office buildings, laboratories, and more requiring specialized solutions.

Hooper's systems ensure optimal performance, comfort, and efficiency for every type of commercial or industrial environment. We engage in projects with an eye on the future. Sustainable building practices and reducing the carbon footprint of our projects are critical to our business model. Hooper's HVAC team has extensive experience working on geothermal systems and Leadership in Energy and Environmental Design projects.



DEARBORN, MI
Ford Motor Company

Hooper installed an underground CHW and HW piping system to connect Ford's Central Energy Plant to their central campus office and dynamometer lab. This construction project was designed to improve energy supply resilience and reduce the company's carbon footprint.



AREAS OF EXPERTISE

PLUMBING

Hooper has been the contractor of choice in some of Wisconsin's highest-profile projects.

Our expansive project portfolio along with name recognition and sustained growth give our company a distinct advantage over others, particularly when it comes to plumbing quality and consistency. It is with great pride that for over 112 years, Hooper has designed and installed state-of-the-art plumbing systems that have and will continue to save lives and promote health and well-being with sophisticated medical gas systems in our hospitals; specialty piping for biopharmaceutical installations to advance health; and help further the technological advances in green initiatives.

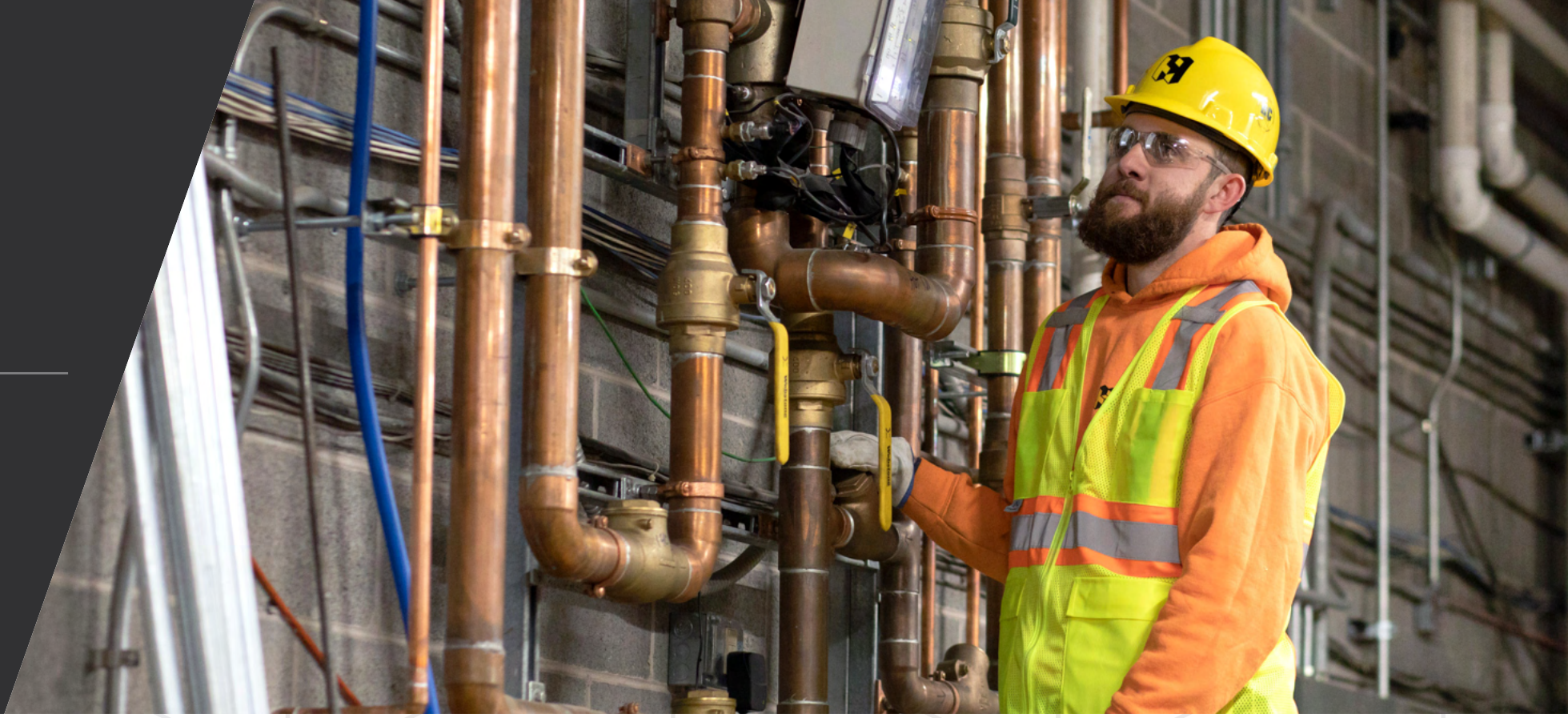
Whether a multi-million dollar project or a small business, nobody wants to worry about the integrity of their plumbing, especially when health and sanitation are at stake. As times have changed and applications have become more complex, Hooper has been there to meet the most sophisticated plumbing requirements.

The workforce at our company is comprised of some of the best and brightest in the industry. Collectively, they bring years of training along with experience and a commitment to your project that you will find both focused and enthusiastic. We consistently rank as one of the highest in the annual summary of total hours worked in the markets we serve.



A Leader in Sustainable Building

- Design-build LEED recognized provider
- Accredited solar hot water system installer and service contractor
- Manufacturer certified storm and grey-water system contractor
- Expert in geothermal installations
- Dane County Climate Champion award recipient



MADISON, WI

UW Health

Hooper has completed **over 100** major projects with UW Health in the last 10 years alone. One example of this is the Eastpark Medical Clinic, recognized for excellence in construction with a **Daily Reporter Top Projects Award** and **AGC Build Wisconsin Award** in 2025.

Hooper's work was also highlighted in a television documentary about UW Hospital at the American Center featured on the Building Wisconsin Television Network.

Scan the QR code to watch the documentary!

SCAN ME





AREAS OF EXPERTISE

FIRE PROTECTION

Hooper is one of only a few companies throughout the Midwest that handles all their own fabrication in-house.

This allows us to control the high quality that end users expect as well as meet the schedules that construction demands.

We can fabricate carbon steel, galvanized steel, and stainless steel pipe, which allows us to meet the needs for any project and specification. Size doesn't matter for our field crews, with dedicated contract and service teams; installing, maintaining, and inspecting systems is what we do.

Whether it is a wet, dry, foam, pre-action, deluge, clean agent, in-rack, stand pipe, or fire pump; we have the expertise to handle them all.

Hooper's fire protection systems are designed in-house by our own VDC designers. Having NICET Certified individuals helps Hooper ensure each project will have proper planning and code compliance from the start.

The fire protection project management team has decades of experience in both design and field backgrounds. Regular inspections adhere to the National Fire Protection Association (NFPA) and local fire codes are essential for maintaining system effectiveness and building safety.



AREAS OF EXPERTISE

PROCESS PIPING

Hooper's Process Piping team has fabricated and installed miles of carbon steel, stainless steel, aluminum, alloy 20, Hastelloy, AL6XN, chrome, and other specialty piping materials. Our welders are qualified and proficient in the following welding processes:

- **SMAW** – Shielded Metallic Arc Welding
- **GTAW** – Gas Tungsten Arc Welding
- **GMAW-FC** – Gas Metallic Arc Welding (Flux-Cored)
- **GMAW-S** – Gas Metallic Arc Welding (Semi-Automatic)
- **GTAW-O** – Orbital Welding of Tube and Piping

We maintain an ASME Quality Control Program which provides us with continuing certification to perform work under the following code stamps:

- **ASME "PP"** – Authorized by the American Society of Mechanical Engineers to fabricate and assemble pressure piping.
- **ASME "U"** – Authorized by the American Society of Mechanical Engineers to manufacture and assemble unfired pressure vessels.
- **NATIONAL BOARD "R"** – Authorized by the National Board of Boiler and Pressure Vessel Inspectors to perform repairs and/or alterations to power boilers and pressure vessels.



"Hooper Corporation's collaborative and fair approach was evident from project kickoff through construction, commissioning, and startup. Your high quality of work enabled us to expeditiously complete commissioning and qualification to start manufacturing."

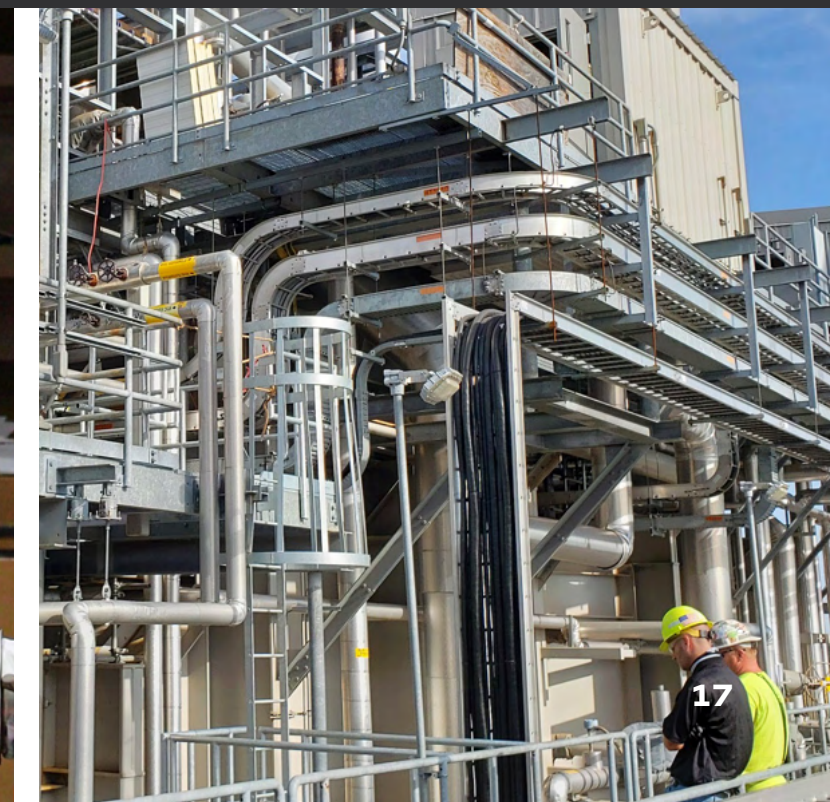
ANDREW BURLEY
PROMEGA CORPORATION

PROCESS SYSTEMS

- High Purity Piping & Glass
- High Purity Water, WFI Systems
- High Alloy Systems (AL6XN, Inconel Alloy 20, Chrome-Moly)
- PVDF, PP, and PVC Socket and Butt Fusion Systems
- Cryogenic Systems

POWER SYSTEMS

- Campus and Central Utility Systems
- Steam and Chilled Water Utilities
- Boiler systems HRSGs
- Direct Bury Tank Systems and Specialty Registration





We collaborate closely with our clients throughout the design process, ensuring that every project meets and exceeds expectations.

Our diverse portfolio includes specialized stainless steel countertops for national restaurant chains like Chipotle and Noodles & Company, as well as large scale art installations showcased at prestigious locations, including the White House in Washington, D.C.



 VERONA, WI
Epic

For more than 20 years, Hooper has provided specialty contractor services to Epic on projects of all sizes.

Highlights have included a major geothermal expansion, pump house, and underground distribution piping, in addition to Deep Space Auditorium, Castaway, Creatures, Guilds, and Sci-Fi buildings across multiple campuses.

AREAS OF EXPERTISE

CUSTOM METALS

Hooper's Custom Metals delivers precision engineered metalwork tailored to a wide range of industries.

Our expertise blends durability, strength, and aesthetic appeal, utilizing high-quality materials such as stainless steel, aluminum, mild steel, galvanized steel, zinc, bronze, brass, and copper. Using advanced techniques like CNC machining, high-definition plasma cutting, rolling, and polishing, we craft custom products with exceptional accuracy and consistency.



PLOVER, WI

Food and Farm Exploration Center

Hooper's Mechanical team helped weld the **World's Largest Potato Masher** for this 50,000-square-foot facility featuring a teaching farm, museum, and community center located on 24 acres in Plover, Wisconsin.

AREAS OF EXPERTISE

INDUSTRIES SERVED

We're proud to support clients across a diverse range of industries, helping them build spaces that support innovation, growth, and community impact.



MADISON, WI

Madison Metropolitan School District

Hooper completed a multi-school facilities upgrade involving plumbing, fire protection and HVAC systems as part of a \$317 million investment by MMSD. Improvements resulted in better energy efficiency and a higher quality of student comfort, health and safety.

Biopharmaceutical

REPRESENTATIVE CLIENTS

- Arrowhead Pharmaceuticals
- Catalent Pharma Solutions
- Fujifilm Cellular Dynamics
- Illumina
- Millipore Sigma (Verona, Madison & Sheboygan Falls Campuses).
- Promega Corporation
- Scientific Protein Labs

Commercial

REPRESENTATIVE CLIENTS

- Epic
- Fiserv Forum
- Sentry
- TruStage

Manufacturing

REPRESENTATIVE CLIENTS

- CEVA Animal Health
- DuPont Nutrition and Health
- eGenesis
- Eurofins Microbiology
- Novenesis
- Promega
- Sub-Zero

Industrial

REPRESENTATIVE CLIENTS

- Cardinal Glass
- Emmi Roth
- Ford Motor Company
- Sierra Nevada

Healthcare

REPRESENTATIVE CLIENTS

- Ascension
- Aspirus Health
- Froedtert and MCW
- Marquette Hospital
- SSM Health
- VA Hospitals and Clinics
- UnityPoint Health - Meriter
- UW Health
- Many regional providers across Wisconsin

Power Generation

REPRESENTATIVE CLIENTS

- Alliant Energy
- Calpine
- LSPower
- Madison Gas & Electric
- We Energies

Educational

REPRESENTATIVE CLIENTS

- Beaver Dam School District
- DeForest School District
- Madison Metropolitan School District
- Sun Prairie School District
- University of Wisconsin
- Verona Area School District
- Waunakee School District
- Wausau School District

Food and Beverage

REPRESENTATIVE CLIENTS

- Brakebush
- Chipotle Restaurants
- DuPont Nutrition and Health
- Foremost Farms
- Saputo
- Wisconsin Spice

Nuclear Medical Production

REPRESENTATIVE CLIENTS

- Northstar
- Shine



MILWAUKEE, WI

Fiserv Forum

Hooper completed plumbing systems including gas piping, carbon dioxide piping, and therapy pools for this 714,000-square-foot arena.

SINCE 1913

ABOUT HOOPER

For more than a century, Hooper has grown to become a well-respected electric power & mechanical contractor.

With headquarters in Wisconsin and regional offices in the states of Colorado, Florida, and Ohio, Hooper provides a wide range of services to support commercial and residential clients.

Hooper's areas of expertise include the fabrication and installation of complex plumbing, process piping, fire protection, and HVAC systems as well as the construction of substations and high-voltage transmission and distribution lines. Hooper also actively provides power line clearance and deploys emergency storm response teams around the country to help restore power to communities ravaged by natural disasters. For homeowners in the Wisconsin region, Hooper's Service Division provides 24-hour maintenance and repair on HVAC and plumbing systems. Businesses also benefit from these services in addition to fire protection options provided by Hooper's certified technicians.



Through its charitable foundation, Hooper is honored to provide essential funding to community nonprofits that support our neighbors in need.

Built on a reputation of excellence and trust, Hooper plays an integral role in delivering the resources needed for people to live and work in comfortable, healthy environments. The firm's Safety Empowered philosophy provides the knowledge, equipment, and investment needed to prevent harm and save lives both on and off the job site.

For more information, visit hoopercorp.com



HOOPER

hoopercorp.com

HOOPER CORPORATION | MECHANICAL DIVISION

Corporate Headquarters

6450 Pederson Crossing Boulevard
DeForest, Wisconsin 53532-1613
(608) 249-0451

North Central Wisconsin

1630 County Road XX
Rothschild, Wisconsin 54474-9098
(715) 265-3365

Fabrication Facility

6400 Pederson Crossing Boulevard
DeForest, Wisconsin 53532-1613
(608) 249-0451

Southeast Wisconsin

11020 W Plank Court, Suite F
Wauwatosa, Wisconsin 53226-3279
(414) 373-6378